

Supa Stainless 20



Description

Supa Stainless shielding gas mixtures are designed for the highest quality Gas Metal Arc Welding (GMAW) of Stainless Steel, Nickel and Duplex Stainless steel alloys where controlled penetration, low spatter rates, weld face appearance and high weld-metal integrity are of utmost importance. Supa Stainless mixture contains Helium that allows better heat transfer into the weld than with argon alone. With the addition of Carbon Dioxide it reduces the spatter and gives a superior weld finish.

Applications

- Shielding gas for high deposition of carbon steel/stainless steel
- Increased heat input because of the Helium in the mixture allows higher higher travel speeds whilst still maintaining good control of bead shape. Ideal for robotic applications
- Heavy single pass fillets in structural components
- Capable of welding over rust surfaces and oil
- Welding tank seams at higher welding speeds
- Fabricating stainless steel tanks and components for food, chemical and pharmaceutical

Hazard statement(s)

- Contains gas under pressure; may explode if heated.

Prevention statement(s)

- None allocated.

Response statement(s)

- None allocated.

Storage statement(s)

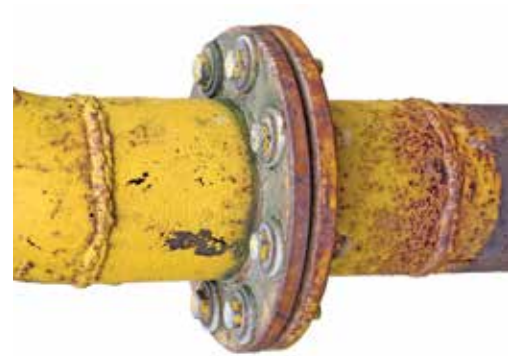
- Protect from sunlight. Store in a well-ventilated place.

Other hazards

- Asphyxiant. Effects are proportional to oxygen displacement.

Signal Word: Warning
 UN No.: 1956
 Hazard No.: 2RE
 Chem Symbol: N/A
 Classification: AS 4882-2003:
 SGAHeC-20/2.5

Pictograms:





Supa Stainless 20

General Specifications

Specifications	G Cyl.	12 Pack
Cylinder/Pack 101.325kPa @15°C) - L	9.7	122.4
Water capacity per cylinder - L	50	600
Cylinder Colour	Peacock Blue Body/Brown Band/Green Grey Shoulder	
Outlet Connection	Type 10	
Package Dimensions (H x W x D) - mm	1,510 x 230	1,900 x 780 x 1,020

Cylinder dimensions are approximate – variations may occur due to manufacturing tolerances. Height includes the valve. Container sizes may vary from state to state.

Package Sizes Available



Quality Assurance

Supagas Pty Ltd is committed to comply with the requirements of ISO 9001-2015 and to continually improve the effectiveness of our Quality Management System.

Everyone at Supagas understands we must provide a safe environment for both our employees and the wider community. We are therefore committed to implement and maintain a continual improvement approach throughout the organisation whilst also meeting all applicable statutory and regulatory requirements.

NATA Accreditation

The Supagas Laboratory located in Ingleburn, NSW has a NATA



For Further Information

On how we can help you with all your residential and industrial gas needs, view our website supagas.com.au, call Customer Service on 13 78 72 or drop in to your local Supagas branch.

Typical Analysis

He	Ar	CO ₂	O ₂	Moisture
Balance	77.5%+-7.8%	2.5% ± 0.5%	<10ppm	<10ppm